

The logo for Edge, featuring the word "Edge" in a bold, sans-serif font. The letter "E" is stylized with a white triangle pointing right, and the letter "d" is stylized with a white triangle pointing left.

IFC | International
Finance Corporation
WORLD BANK GROUP

Creating Markets, Creating Opportunities

A large, stylized version of the Edge logo. The "E" is blue, the "d" is green, and the "ge" is blue. The logo is set against a background of a modern glass skyscraper.

November 2022
Washington, D.C.

2022 Champions Summit

ATTENDING CHAMPIONS



VINTE, Mexico



Balwin Properties, South Africa



Madrid Inmobiliaria, Peru



FIBRA UNO, Mexico

FIBRA
Macquarie
México



MACQUARIE

FIBRA Macquarie, Mexico



COMVIVE, Mexico



Goldkey, Ghana



CANADEVI, Mexico



Constructora Bolivar, Colombia



Plaza Logistica, Argentina



Constructora Capital, Colombia



Davivienda, Colombia



Ashmore, USA/Colombia



HC Capital, Cote D'Ivoire



Corinne Figueredo
EDGE Global Operations Lead
International Finance Corporation





Vivek Pathak

*Director and Global Head, Climate Business
International Finance Corporation*



Ommid Saberi
EDGE Global Technical Lead
International Finance Corporation



Creating Markets, Creating Opportunities

Meet the EDGE Team



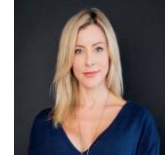
Prashant Kapoor,
Chief Industry Specialist



Ommid Saberi
Technical Lead



Corinne Figueredo
Global Operations Manager



Michelle Farrell
Marketing & BizDev Lead



Sandeep Singh
Global BizDev Lead



Nhan Thi Thu Nguyen
Strategy & Finance



Sandro Díez-Amigo
MAGC Research Lead



Silvia Elena Solano Quesada
Regional Lead, LAC

Meet the EDGE Team



Sarah Santucci
Marketing Lead



Philipp Hlatky
Marketing & Strategy Specialist



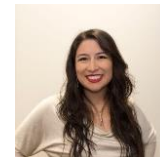
Vanya Candia
Operations Officer



Lakshmi Minnal
Product Specialist



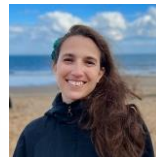
Elfinesh Atske
Program Assistant



Irene Montserrat
Technical Specialist



Oxana Ware
MAGC Research



Naz Beykan
Climate Resilience Expert, BRI



Eduardo de la Cerda
Photography

ATTENDING CHAMPIONS



VINTE, Mexico



Balwin Properties, South Africa



Madrid Inmobiliaria, Peru



FIBRA UNO, Mexico

FIBRA
Macquarie
México



MACQUARIE

FIBRA Macquarie, Mexico



COMVIVE, Mexico



Goldkey, Ghana



CANADEVI, Mexico



Constructora Bolivar, Colombia



Plaza Logistica, Argentina



Constructora Capital, Colombia



Davivienda, Colombia



Ashmore, USA/Colombia



HC Capital, Cote D'Ivoire

The logo for Edge, featuring the word "Edge" in a white sans-serif font. The letter "E" is stylized with a white triangle pointing right, and the letter "d" is stylized with a white triangle pointing left.

Edge



IFC | International
Finance Corporation
WORLD BANK GROUP

Creating Markets, Creating Opportunities

A large, stylized version of the Edge logo. The word "Edge" is in a blue sans-serif font. The letter "E" is stylized with a blue triangle pointing right, and the letter "d" is stylized with a blue triangle pointing left. The letter "g" is stylized with a green triangle pointing left.

Edge

November 2022
Washington, D.C.

2022 Champions Summit



Paseo Villa del Río

33% energy - 54% water - 47% embodied energy

Key EDGE Metrics:

- 7 properties certified
- 273,186 square meters certified and preliminarily certified
- **Carbon Zero Pledger**



Ashmore

AshmoreAVENIDA:

Private equity real estate investment arm in Latin America of the Ashmore Group, specialist Emerging Markets asset manager. Focused on the development of sustainable low-income housing projects with experience across asset types.



Oscar Ardila

Institutional Business Development, Real Estate Executive





Periferico 428 – Mexico City

30% energy - 36% water - 39% embodied energy

Key EDGE Metrics:

- 4 clients certifying with EDGE
- 337,819 square meters certified (6,764 housing units).



CANADEVI VM:

National Chamber of the Housing Development and Promotion Industry. The association counts with more than a thousand affiliated developers throughout the country and 34 state delegations. It is committed to promoting EDGE amongst its members and has so far organized dozens of trainings and meetings with potential certifiers.



Yuri Zagorin Alazraki

President



Privadas del Parque, Zumpango

40% energy - 36% water - 65% embodied energy

Key EDGE Metrics:

- 1 project certified with EDGE
- 45,936 square meters certified
- **Carbon Zero Pledger**



COMVIVE:

Founded in 2014, COMVIVE has offered energy-efficient housing solutions in sustainable communities considering economic, environmental and social sustainability targeting affordable and middle-class families. Its management team with extensive knowledge of the sector with more than 20 years of experience in the promotion of housing and urban development.



Iñigo Orvañanos

Director



Rubén Cors

Chief Strategy &
Sustainability Officer



Boreal Madrid

21% energy - 37% water - 47% embodied energy

Key EDGE Metrics:

- 25 projects certified with EDGE
- 1,036,441 square meters certified



Constructora Capital:

Constructora Capital's purpose is to provide quality of life for its clients. The company develops housing projects seeking to offer a comprehensive vision of sustainable development, placing clients as a fundamental priority in its operation.



Pablo Echeverri

Presidente





Mítikah, Mexico City

21% energy - 37% water - 47% embodied energy

Key EDGE Metrics:

- 7 projects certified with EDGE
- 222,499 square meters certified



FUNO:

FUNO is an investment trust and real estate in Mexico focused on the generation of sustainable value through the operation, acquisition, sale and development of real estate commercial use. FUNO's business philosophy is based on extensive and deep knowledge, as well as a decision process focused 100% on real estate.



Karen Mora

Sustainability Director



REY025 – Reynosa, Tamaulipas

42% energy - 38% water - 99% embodied energy

Key EDGE Metrics:

- 54 projects certified with EDGE
- 800,207 square meters certified

Fibra Macquarie :

FIBRA Macquarie México is a premier owner of institutional quality industrial and retail real estate with a best-in-class internal property management platform and attractive growth pipeline. The company aligns its ESG commitments, investment strategies, and business operations to globally recognize and adopt sustainability objectives.



Simon Hanna

CEO



Andrew McDonald-Hughes

CFO



PL Echevarría WH1, Buenos Aires

38% energy - 28% water - 43% embodied energy

Key EDGE Metrics:

- 12 projects certified with EDGE
- 388,918 square meters certified
- First EDGE Champion in Argentina



Plaza Logística:

Plaza Logística develops and operates cutting-edge Logistics Parks, known as "Triple A". The company offers an innovative model of multi-client park offering its clients a cutting-edge format under the highest international standards of quality, safety and sustainability, with very significant savings for their logistics operations.



Sergio Cohen

Corporate Financial Manager



Madrid Prana, Lima

23% energy - 34% water - 67% embodied energy

Key EDGE Metrics:

- 7 projects certified with EDGE
- 38,273 square meters certified
- 1st Champion in Peru



Madrid Inmobiliaria:

Founded in 2004, Madrid Inmobiliaria builds residential projects for the affordable and middle income segment. The company is currently certifying 100% of its portfolio with EDGE in 2020 and was the first in Peru to obtain an EDGE certification and has helped drive the development of green buildings in the country.



Cesar Madrid

CEO



Caminos del Vínculo, Bogota

27% energy - 34% water - 59% embodied energy

Key EDGE Metrics:

- 72 projects certified with EDGE
- 2,142,337 square meters certified
- 1st Champion in Colombia



Constructora Bolivar:

Created in 1983 with the support of Grupo Bolivar, the company specializes in building large housing projects in various cities in Colombia targeting middle- and low-income segments. Given the floorspace the company builds annually, Constructora Bolivar is considered the largest developer in the country.



Alejandra Robledo

Sustainability Manager



Real Granada, Tecamac, State of Mexico

37% energy - 44% water - 71% embodied energy

Key EDGE Metrics:

- 93 projects certified with EDGE
- 594,431 square meters certified (8,375 housing units)
- **Zero Carbon Pledger**



Vinte:

Vinte develops a concept of comprehensive sustainable communities where clients not only have a home, but also, they are able to access other types of infrastructure including roads, educational, commercial and recreational facilities, connectivity services, technology for housing and community development. Between 2019 and 2022, Vinte has certified 8,299 EDGE homes located in 6 states between, including 841 EDGE Advanced.



Gonzalo Pizzuto

Manager of Investors Relations



The Blyde

Type K: 48% energy - 35% water - 34% embodied energy

Balwin, South Africa

- 1st set of projects achieved EDGE Level 1, 2nd set of projects aiming for **EDGE Advanced**.

Key EDGE Metrics:

- In 2019 Balwin Properties registered 13,000 units (~ 1 million m2) for largest registration for EDGE globally by one developer.
- In 2021 Balwin registered an additional 12,000 units (~ 1 million m2)
- **17** projects certified with EDGE
- **1.9 million** square meters **certified**, **22,657 homes**



Balwin Properties:

Balwin Properties is a listed company with more than two decades' experience in the South African property industry. Since 1996, Balwin has been designing, building, marketing and selling secure, affordable, high-quality, environmentally-friendly sectional title residential apartments.



Matthew Whalley

Director and Green Innovation Manager



Goldkey, Ghana

PwC Tower

22% energy – 55% water – 25% embodied energy

EY Building

36% energy – 56% water – 20% embodied energy

Key EDGE Metrics:

- Two projects certified with EDGE
- 12,034 square meters certified



GOLDKEY
PROPERTIES
SINCE 1997

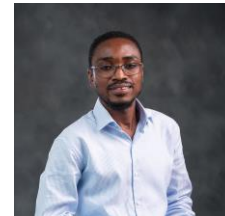
Goldkey Properties:

Since 1997, Goldkey Properties has been developing award-winning quality residential, commercial and mixed-use spaces all over Accra.



Fuseina Abu

Managing Director



Alexander Dordor

Commercial Director



Mirador de Jaboqué, Bogotá

20% energy - 42% water - 54% embodied energy

Key EDGE Metrics:

- 52 projects certified with EDGE financed by the bank
- 831.801 square meters and 9,040 housing units.



Davivienda:

With more than 19 million customers and being the second largest bank by portfolio in Colombia, Banco Davivienda focuses on promoting greater financial inclusion and sustainable development.



Camilo Albán

VP of Mortgages and Construction Banking



Cosmos Yopougon, Côte d'Ivoire

29% energy - 41% water - 44% embodied energy

Key EDGE Metrics:

- HC Capital catalyzed the green bond market in Francophone Africa by having the first green bond issuance in Cote D'Ivoire for refinancing their Cosmos Yopougon Mall



HC CAPITAL PROPERTIES

HC Capital Properties:

HC Capital Properties ("HCCP") is a privately held investment and development company in the real estate sector with a focus on West & Central Africa.



Cheick Sanankoua

Managing Partner



Ommid Saberi
EDGE Global Technical Lead
International Finance Corporation



Creating Markets, Creating Opportunities

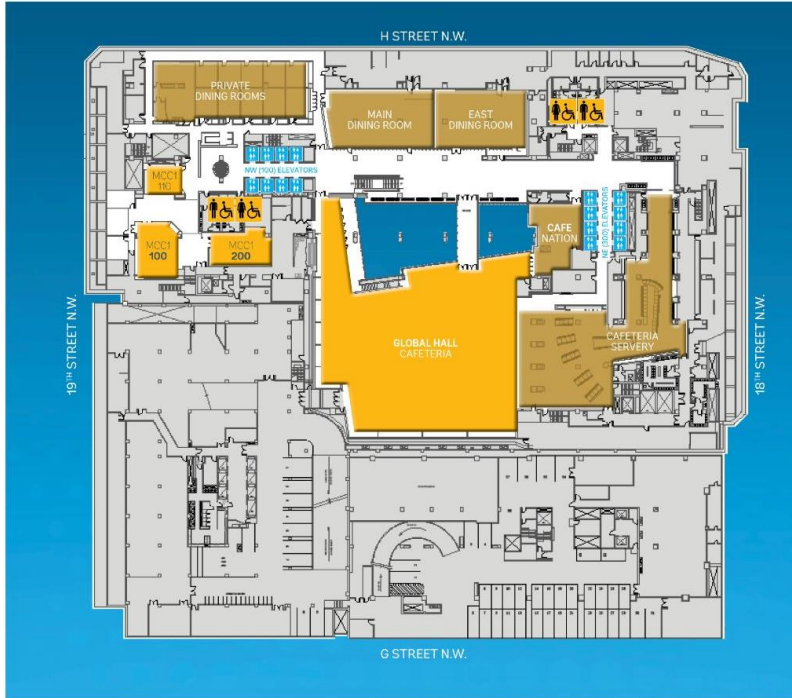


Rajat Malik

*Global MAS Upstream Lead - Tourism, Retail
and Property
International Finance Corporation*



MC C1



The logo for Edge, featuring the word "Edge" in a white sans-serif font. The letter "E" is stylized with a white triangle pointing right, and the letter "d" is stylized with a white triangle pointing left. The background of the logo is a blue and green geometric pattern.

Edge



IFC | International
Finance Corporation
WORLD BANK GROUP

Creating Markets, Creating Opportunities

A large, stylized version of the Edge logo. The word "Edge" is in a blue sans-serif font. The letter "E" is stylized with a blue triangle pointing right, and the letter "d" is stylized with a blue triangle pointing left. The background of the logo is a blue and green geometric pattern.

Edge

November 2022
Washington, D.C.

2022 Champions Summit

ATTENDING CHAMPIONS



VINTE, Mexico



Balwin Properties, South Africa



Madrid Inmobiliaria, Peru



FIBRA UNO, Mexico

FIBRA
Macquarie
México



MACQUARIE

FIBRA Macquarie, Mexico



COMVIVE, Mexico



Goldkey, Ghana



CANADEVI, Mexico



Constructora Bolivar, Colombia



Plaza Logistica, Argentina



Constructora Capital, Colombia



Davivienda, Colombia



Ashmore, USA/Colombia



HC Capital, Cote D'Ivoire

NOT PRESENT CHAMPIONS



Bancolombia, Colombia



AMG Desarrolladores, Mexico



Grupo Ikon, Mexico



Banco Pichincha, Ecuador



Belgica Edificaciones, Peru



Prodesa, Colombia



LatAm Logistic, Costa Rica



Conaltura, Colombia



Ciputra, Indonesia



Paladin Realty, USA



FibraEco, Mexico



Asia Green Real Estate, Indonesia

NOT PRESENT CHAMPIONS



NWP, Indonesia



IHS, South Africa



Modern Shelter , Nigeria



Capital House Group, Vietnam



Acorn, Kenya



IndoSpace, India



EZLand, Vietnam



Rehoboth, Ghana

NOT PRESENT CHAMPIONS



Aga Khan, India



Tata Realty, India



Imperial Homes, Philippines



Italtinas, Philippines



Arthaland, Philippines



Ascott International Ltd, Vietnam



NIA, Abuja Chapter, Nigeria



IDS Equity Holdings, Vietnam



Signature Global, India



CHAMPIONS



MACQUARIE

FIBRA
Macquarie
México





GOLDKEY
P R O P E R T I E S
— SINCE 1997 —











Ashmore



Edge | CHAMPIONS









Edge | CHAMPIONS

CONSTRUCTORA 
CAPITAL / 30
AÑOS
Tu vida, nuestro proyecto.





HC CAPITAL

PROPERTIES

EDGE is currently funded by the UK Government with original funding by Switzerland's State Secretariat for Economic Affairs (SECO)



Schweizerische Eidgenossenschaft
Confédération suisse
Confederazione Svizzera
Confederaziun svizra

Swiss Confederation

Federal Department of Economic Affairs,
Education and Research EAER
State Secretariat for Economic Affairs SECO

Additional support has been provided by Austria, Canada, Denmark, ESMAP, Finland, GEF, Hungary, and Japan.



IFC

**International
Finance Corporation**
WORLD BANK GROUP

Creating Markets, Creating Opportunities

www.edgebuildings.com